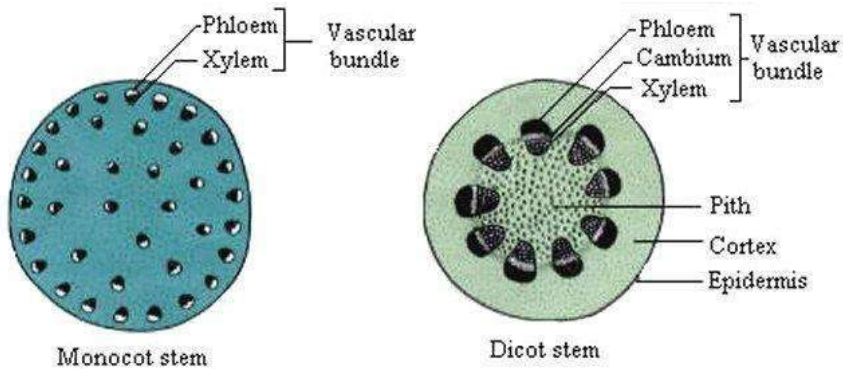


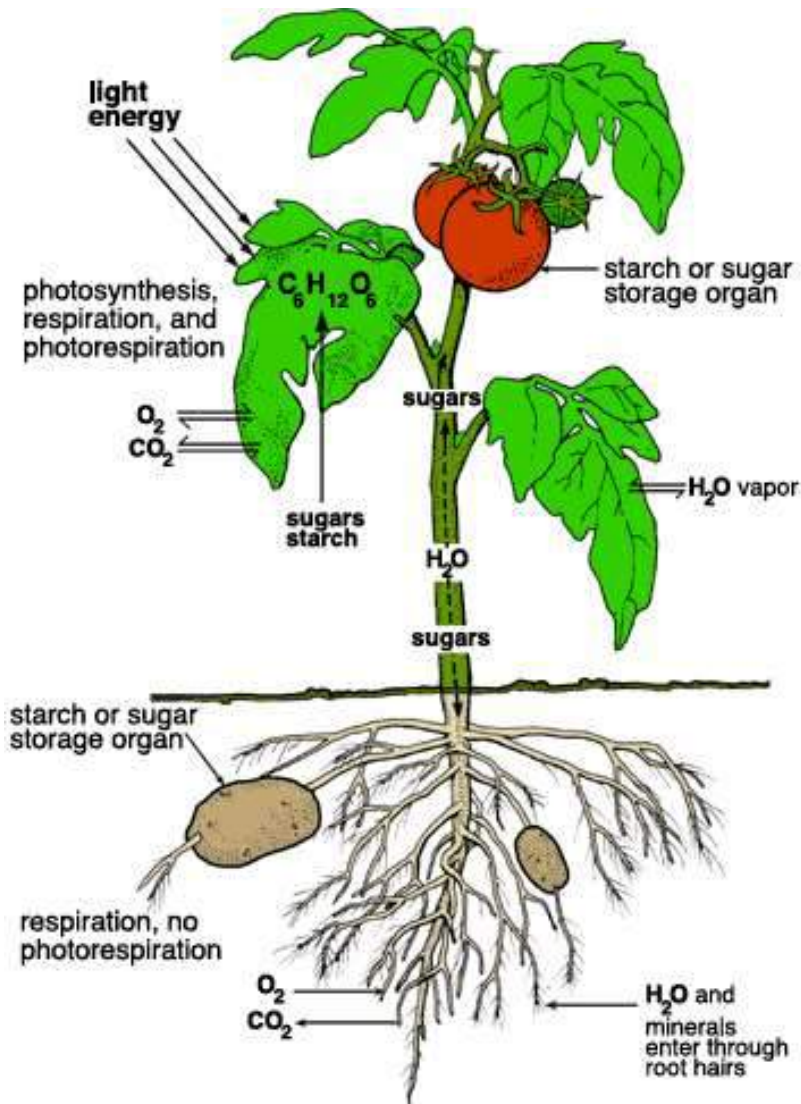
Master Gardener Botany Handout



Xylem - water and nutrient conducting tissue

Phloem – photosynthate (food) conducting tissue

Cambium- layer of tissue that produces new xylem and phloem

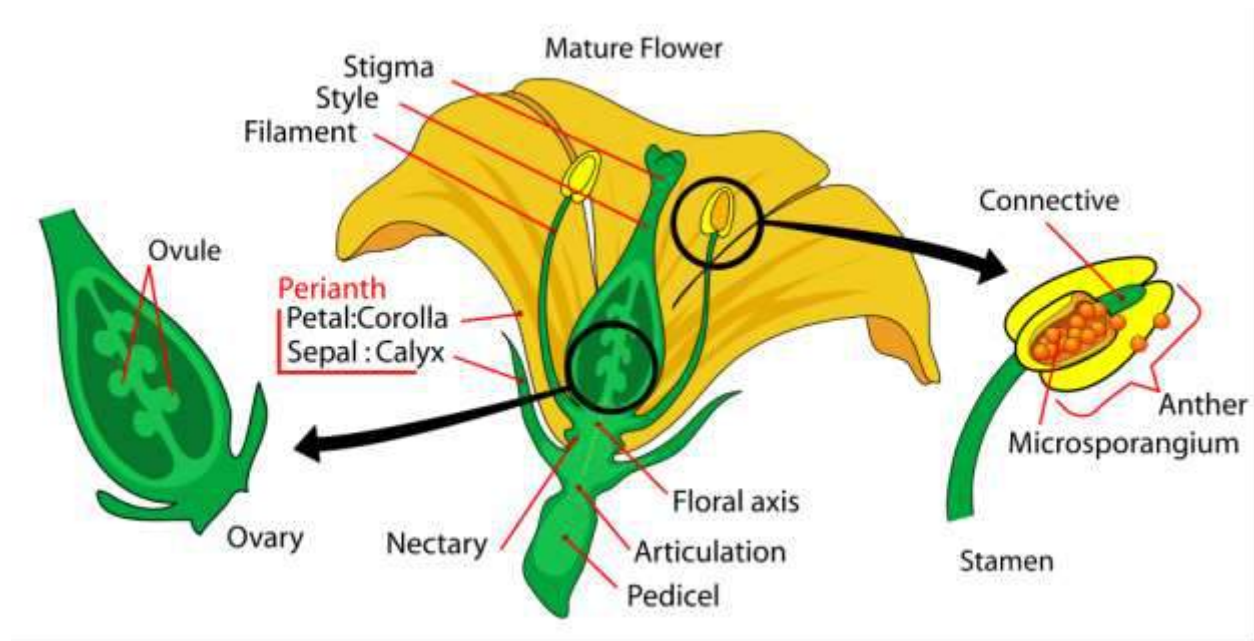


Photosynthesis: the process where green plants convert CO_2 and water to food via energy from the sun

Respiration: the process of converting sugars and starches into energy to be used by the plant for growth

Transpiration: the process of losing water (in the form of vapor) through stomates

Flower Dissection Exercise



Please find the following parts on your flower:

Perianth

- Petals
- Sepals

Female Parts

- Stigma
- Style
- Ovary
- Ovule
- Pistil (entire female structure)

Male Parts

- Anther
- Filament
- Stamen (entire male structure)

Is your flower complete or incomplete (containing all the flower parts)?

Is your flower perfect or imperfect [has male (staminate) and female (pistillate) parts]?