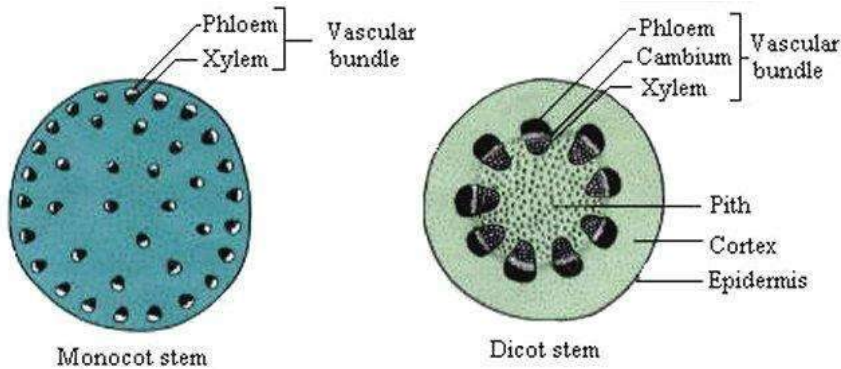


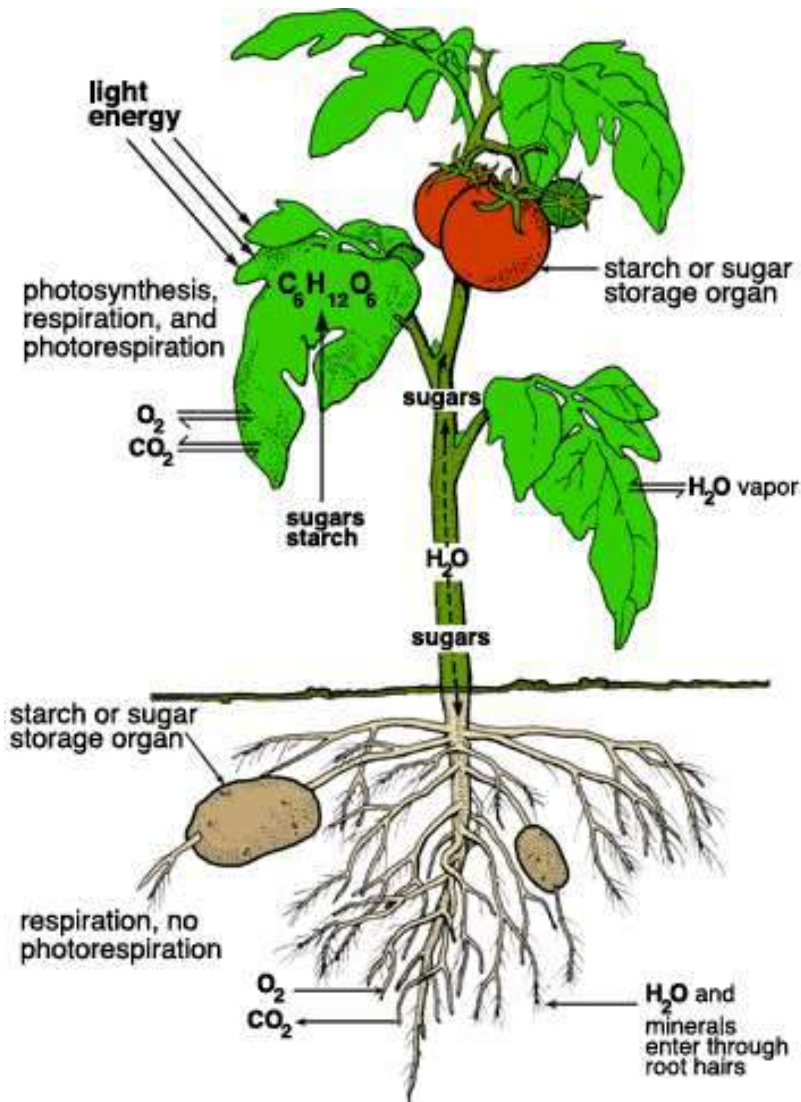
## Master Gardener Botany Handout



**Xylem** - water and nutrient conducting tissue

**Phloem** – photosynthate (food) conducting tissue

**Cambium**- layer of tissue that produces new xylem and phloem

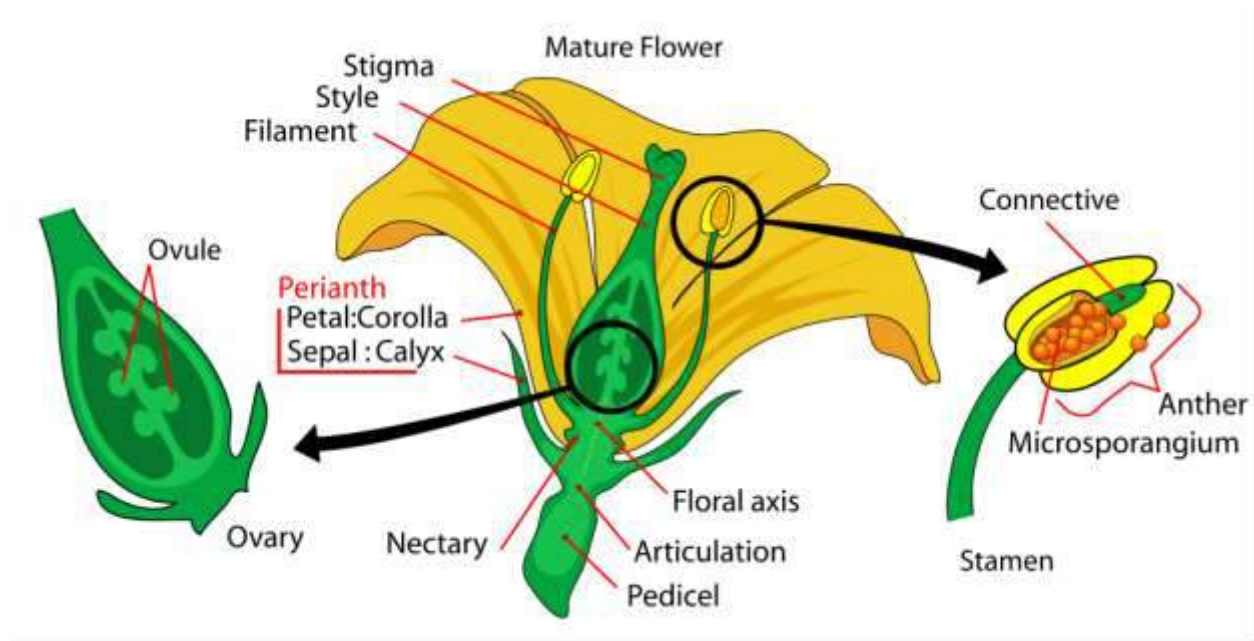


**Photosynthesis:** the process where green plants convert  $CO_2$  and water to food via energy from the sun

**Respiration:** the process of converting sugars and starches into energy to be used by the plant for growth

**Transpiration:** the process of losing water (in the form of vapor) through stomates

## Flower Dissection Exercise



Please find the following parts on your flower:

### Perianth

- Petals
- Sepals

### Female Parts

- Stigma
- Style
- Ovary
- Ovule
- Pistil (entire female structure)

### Male Parts

- Anther
- Filament
- Stamen (entire male structure)

Is your flower complete or incomplete (containing all the flower parts)?

Is your flower perfect or imperfect [has male (staminate) and female (pistillate) parts]?